

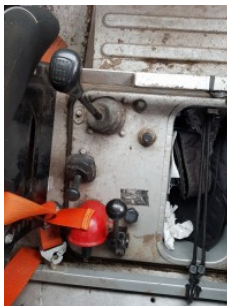
1300 L Rally 366

unimogdonald.nl

Jaar 1981
Kilometerstand 50

Algemeen

Type U425 U437 U435



Omschrijving

Unimog 1300 rally 366a
engine 8-speed gearbox
special springs front and
rear adjustable straps for
the front and rear axle
special Koni rally shock
absorbers special rubber
collection buffers which
also serve as stabilizers
truck roll cage behind
the cab roll cage in the
cabin approved rally
seats Sparco and sabelt
as new special approved
6 point rally belts gear
shift lever adjusted
suspension cab adapted
for a stabiler driving
comfort move the diesel
tank upwards heavier
steering pump
customized exhaust
more ground clearance
created LED lighting for
4x behind 3rd brake light
behind white led dust
lamp tool tray at the
back of the loading
platform 2 extra spare
wheels spaciales unimog
jack and wheel wrench
to change wheel
terratrip 202 rally
computer connected to
gearbox inside reading
light fire blanket fire
extinguishers adjusted
steering wheel for extra
driving comfort high air
intake left engine air
high air intake left cabin
fresh air air suction for
motor completely sealed
for deep water crossings
extra cable to turn off the
engine in cab headlight
protectors extended

Opties

Hoge luchtinlaat

Naafreductie

Schijfremmen

Zonneklep